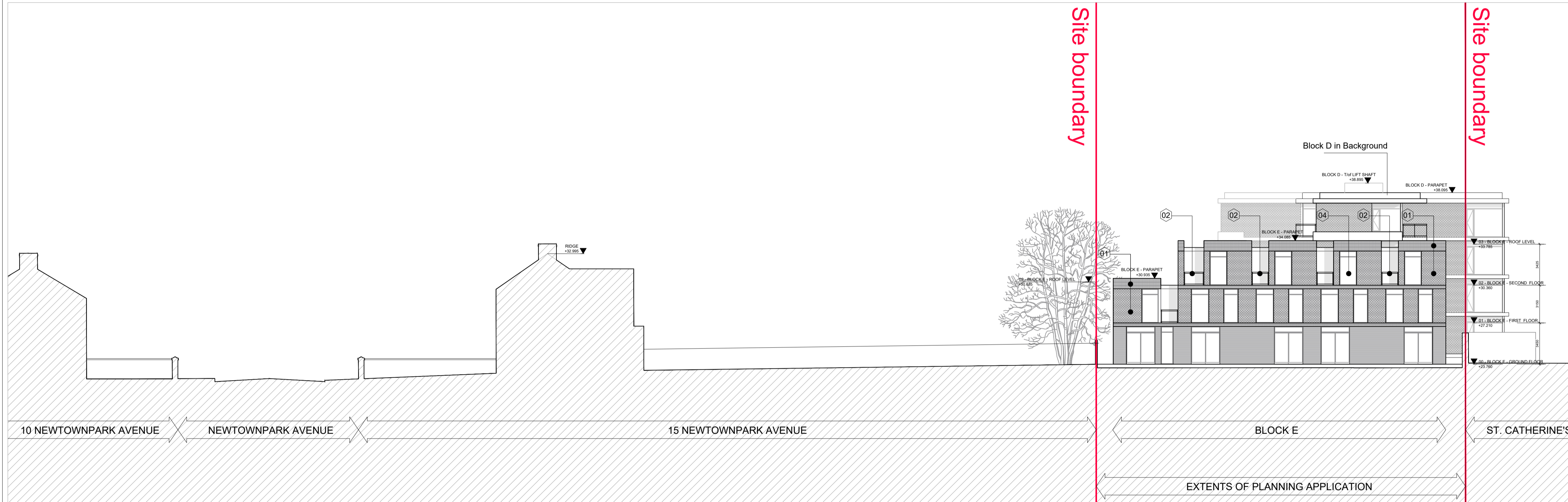


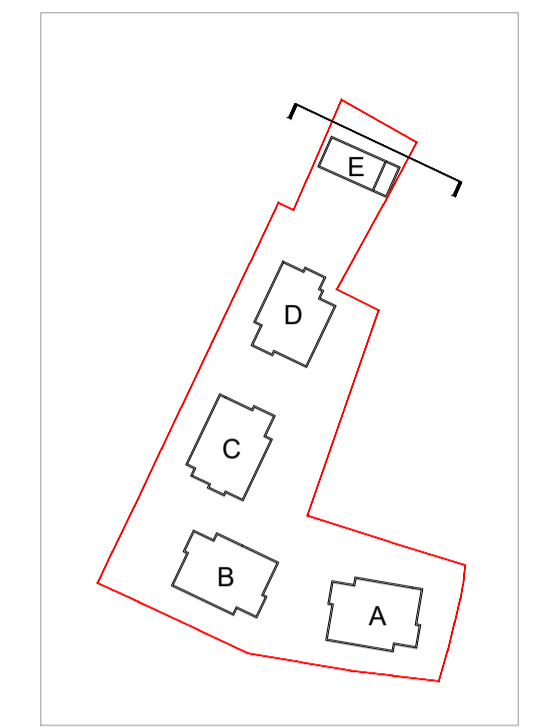
1 **12 - NORTH ELEVATION BLOCK E - PROPOSED**
1 : 500



2 **12 - NORTH ELEVATION BLOCK E - PROPOSED**
1 : 200

NOTE
ALL DIMENSIONS TO BE CHECKED ON SITE
NO DIMENSIONS TO BE SCALED FROM THIS DRAWING
THIS DRAWING IS TO BE READ IN CONJUNCTION WITH
RELEVANT CONSULTANTS DRAWINGS

KEY PLAN:



MATERIAL LEGEND:

- 01 SELECTED BRICK FINISH
- 02 GLASS BALUSTRADE WITH POWDERCOATED MILD STEEL FRAME WITH STEEL HANDRAIL
- 03 GLAZING SYSTEM WITH OPENING DOOR / SLIDER TO SELECTED RAL COLOUR
- 04 WINDOW FRAMES TO SELECTED RAL COLOUR
- 05 PARAPET IN ALUMINIUM TO SELECTED COLOUR
- 06 STONE / RECONSTITUTED STONE BANDING
- 07 CEMENT FIBRE CLADDING TO SELECTED COLOUR

REV	DATE	DESCRIPTION	CHKD	DRN
A	21.10.2020	ISSUED FOR PLANNING	FC	NF

PLANNING

Henry J Lyons

Architecture + Interiors +353 1 888 3333 51-54 Pearse Street
henryjlyons.com info@henryjlyons.com Dublin D02 KA66

CLIENT
GLENVEAGH HOMES LTD.

PROJECT
NEWTOWNPARK AVENUE SHD,
LANDS ADJACENT TO CLUAIN MUIRE,
BLACKROCK, CO. DUBLIN

JOB NUMBER:
DATE: OCT 2020
SCALE: 1:500 & 1:200 @A1
DRAWN: NF
CHECKED: FC
FILE NAME: 950677 CMB P Elevations

DRAWING
**12 - NORTH ELEVATION
BLOCK E
PROPOSED**

BLOCK DRAWING NUMBER ZONE REVISION

P 2012 A

© Henry J Lyons

T:\jobs\90-1950677 Cluain Mhuire\CAD\Planning\2000 Series - Elevations